

# Alston Gardens

Maidenhead • Berkshire • SL6 6DY

Guide Price: £290,000



coopers  
est 1986

# Alston Gardens

Maidenhead • Berkshire • SL6 6DY

A two bedroom ground floor apartment located in Alston Gardens, a highly sought after private development in Maidenhead. Ideally positioned within walking distance of the town centre and train station, making it ideal for commuters. The property comprises hallway with doors leading to the 13ft sitting/dining room allowing access to the communal gardens, 9ft kitchen, 10ft main bedroom, 9ft second bedroom and family bathroom. Outside there is allocated parking and visitor parking.

No onward chain

Two bedroom apartment

Ground floor

Private development

Walking distance to Maidenhead town centre

Walking distance to Maidenhead train station

13ft sitting/dining room

10ft main bedroom

Allocated parking

Visitor parking

These particulars are intended as a guide and must not be relied upon as statements of fact. Your attention is drawn to the Important Notice on the last page.

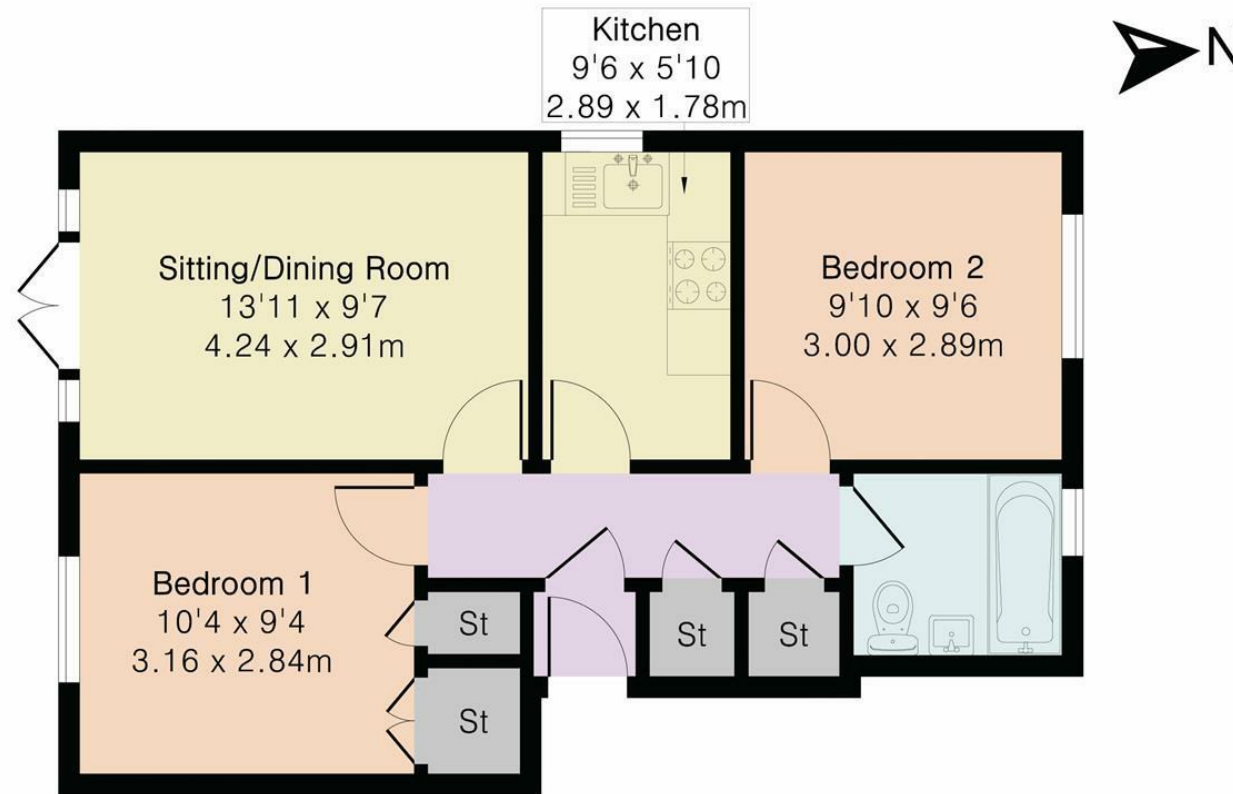




# Alston Gardens, Maidenhead, SL6

Total Area = 532 sq ft / 49.4 sq m

For Identification only - Not to scale

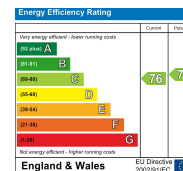


Floor plan produced in accordance with RICS Property Measurement 2nd Edition. Although Pink Plan Ltd ensures the highest level of accuracy, measurements of doors, windows and rooms are approximate and no responsibility is taken for error, omission or misstatement. These plans are for representation purposes only and no guarantee is given on the total square footage of the property within this plan. The figure icon is for initial guidance only and should not be relied on as a basis of valuation.



**42 Queen Street, Maidenhead,  
SL6 1HZ**  
maidenhead@coopersresidential.co.uk

**CoopersResidential.co.uk**



Important Notice: These particulars, whilst believed to be accurate are set out as a general outline only for guidance and do not constitute any part of an offer or contract. Intending purchasers should not rely on them as statements or representation of fact, but must satisfy themselves by inspection or otherwise has the authority to make or give any representation or warranty in respect of the property.

**coopers**  
est 1986